

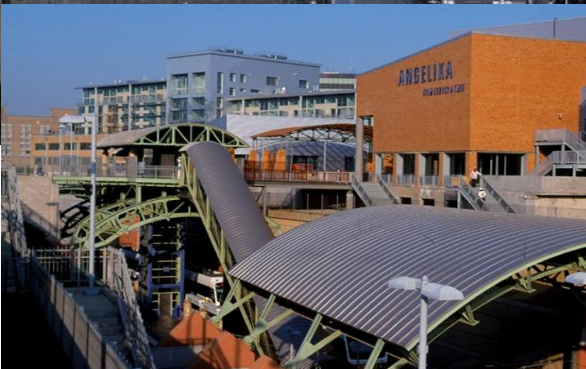
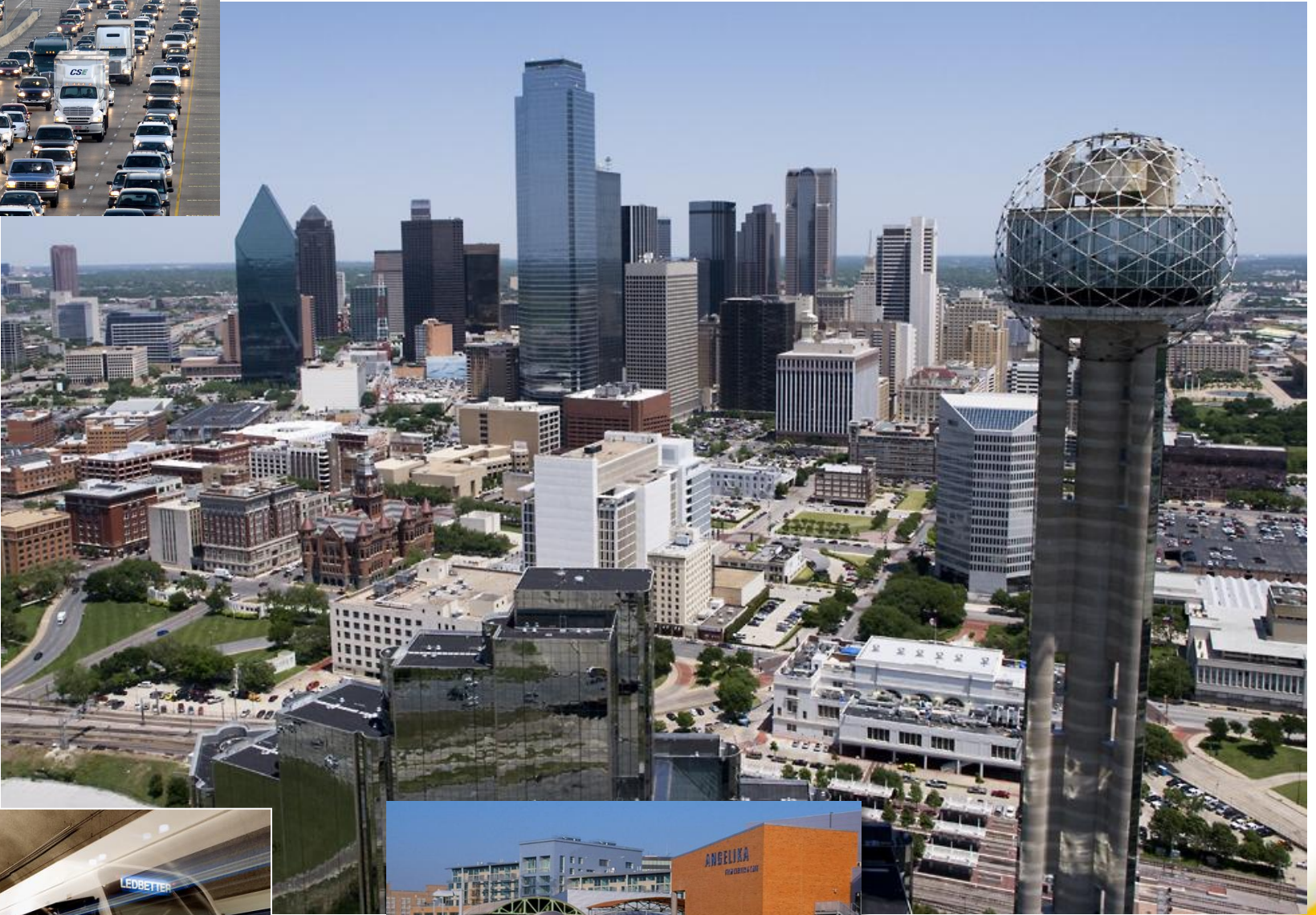


Gary Thomas

President/Executive Director

Dallas Area Rapid Transit











STOP DART NOW



DART Speaks With Forked Tongue



DALLAS COALITION P O BOX 180504

NO TO DART

SAVE

LANCASTER RD.








The map displays the Dallas Area Rapid Transit (DART) system, including various transit lines and stations. Key features include:

- Transit Lines:** Blue Line, Green Line, Orange Line, Red Line, Yellow Line, Silver Line, and TRE to Fort Worth.
- Stations:** Numerous stations are marked, including North Carrollton/Frankford, Trinity Mills, Downtown Carrollton, Farmers Branch, Royal Lane, Walnut Hill/Denton, Las Colinas Carpenter Ranch, North Lake College, South Las Colinas, University of Dallas, Loop 12, Irving Convention Center, Bachman, Love, Burbank, Medical/Market Center, Victory, Cockrell Hill, Tyler/Vernon, Hampton, Westmoreland, 8th & Cornth, Dallas Zoo, Morrell, Illinois, Kiest, VA Medical Center, Ledbetter, Red Bird, Glenn Heights, Pearl, Deep Ellum, West Transfer, Hurst/Bell, Richland Hills, Fort Worth ITC, and Fort Worth T&P Station.
- Geographic Features:** Lake Ray Hubbard, Lake Tarrant, Trinity River, and White Rock Lake.
- Highways:** Major highways shown include I-35E, I-75, I-30, I-40, I-20, I-67, I-35E, I-114, I-183, I-396, I-30, I-45, I-635, I-20, I-67, and I-35E.
- Landmarks:** Lake Ray Hubbard, Lake Tarrant, and White Rock Lake.
- Inset Maps:**
 - TRE to Fort Worth:** Shows the line connecting Fort Worth ITC and Fort Worth T&P Station to Hurst/Bell and Richland Hills.
 - Downtown Dallas:** Shows the area around Victory, West Transfer, Pearl, and Deep Ellum.
- North Arrow:** Located in the top right corner.




A map showing the proposed light rail line from Union Station to Deep Ellum. The line is color-coded: blue for the initial segment, yellow for the middle segment, and green for the final segment. Key stops and landmarks labeled include Union Station, Convention Center, West End, Akard, Rosa Parks Plaza, West Transfer, St. Paul, Pearl, East Transfer, and Deep Ellum. Major highways shown are I-35E, I-45, and I-30.

-  HOV Lane
-  HOV Lane
(Outside DART service area – no DART funding)
-  Future HOV Lane
-  Future HOV Lane
(No DART Funding)

Currently Operating

-  DART Rail Red Line
-  DART Rail Blue Line
-  DART Rail Green Line
-  DART Rail Orange Line
 - Select service peak weekday hours: Parker Road-Bachman,
-  Trinity Railway Express (TRE)

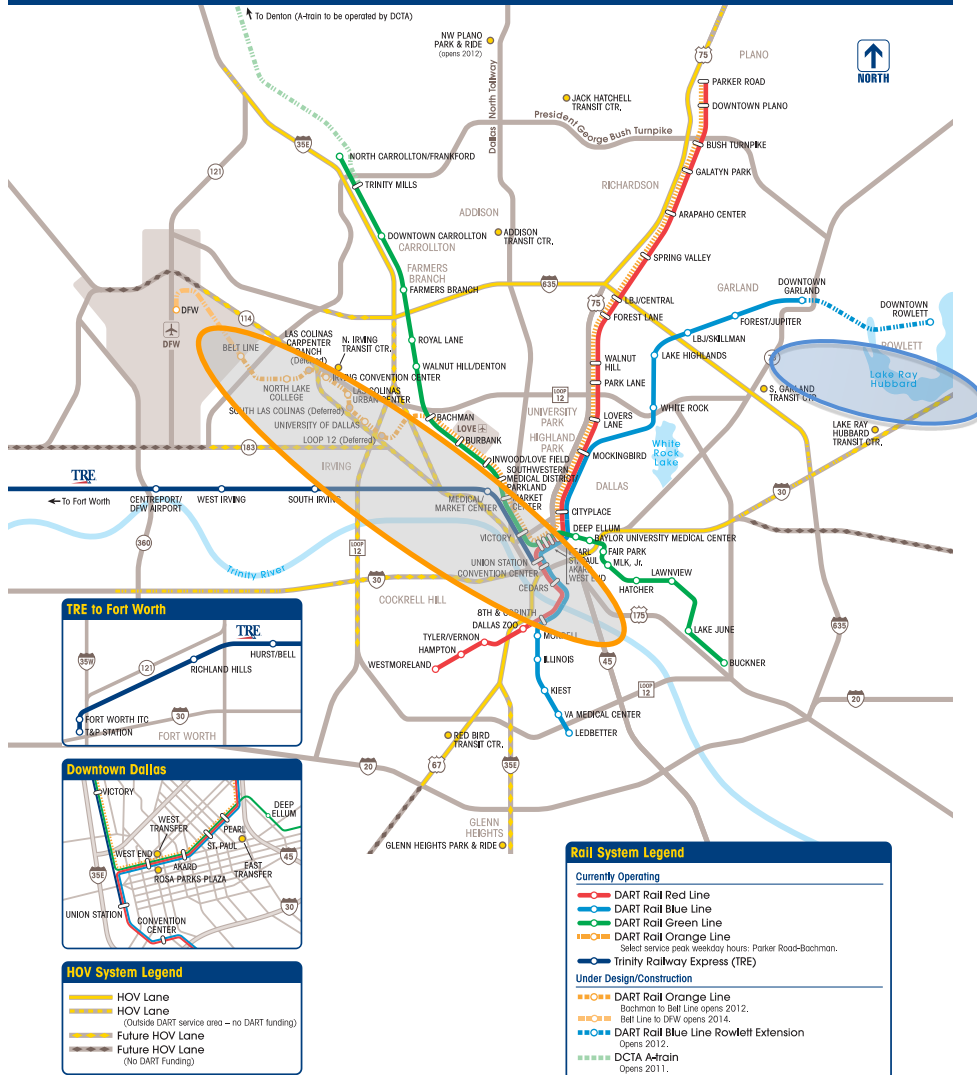
Under Design/Construction

-  DART Rail Orange Line
 - Bachman to Bell Line opens 2012,
 - Bell Line to DFW opens 2014,
-  DART Rail Blue Line Rowlett Extension
 - Opens 2012,
-  DCTA A-train
 - Opens 2011,



DART Rail Expansion

DART Current and Future Services to 2014



Orange Line

- 22.5 kilometers
- First segment opens July 30
- Second segment opens Dec 3
- Third segment to Dallas-Fort Worth International Airport opens in Dec 2014

Blue Line

- 7.25 kilometers between Garland and Rowlett
- Revenue service begins December 3 of this year



Community Involvement



Transportation Funding in the U.S.

- A multi-year transportation bill for all modes of transportation
- Transit projects scrutinized for ridership, environmental and economic impact
- In October, the U.S. Department of Transportation announced \$1 billion to support more than 300 projects
- The projects were selected from a list of more than 800, totaling \$5 billion



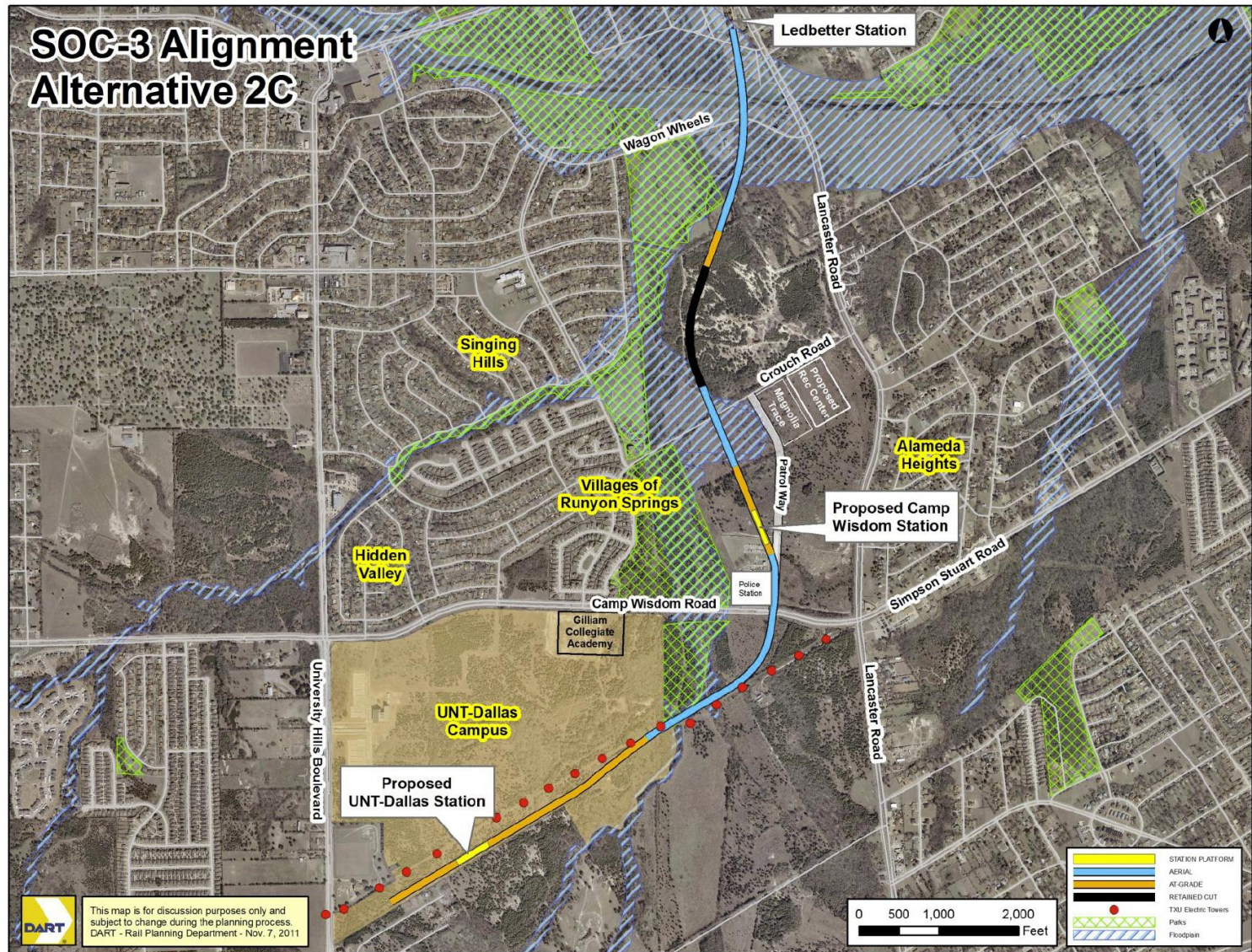
Finding a Way to Build

The Demand Is There

- Public transportation ridership grew by 31% between 1995 and 2010
- 10.4 billion trips were taken on U.S. transit in 2011 – the 2nd-highest annual ridership since 1957
- In 2010, 77% of all transit-related ballot initiatives passed across the country
- The projects were selected from a list of more than 800, totaling \$5 billion



South Oak Cliff Extension



The Cotton Belt Corridor

