



METRO IN WARSAW

Enhancing the metro network

Jerzy Lejk

*President of the Board, CEO
Warsaw Metro Ltd.*





Plan Metropoliteny Warszawskiej

projektowany według zasad racjonalnej organizacji

1925 – Warsaw authorities passed a resolution to develop a project of an underground rail

1950 - Polish government passed a resolutions to build metro in Warsaw,

1957 - Construction works were definitely stopped

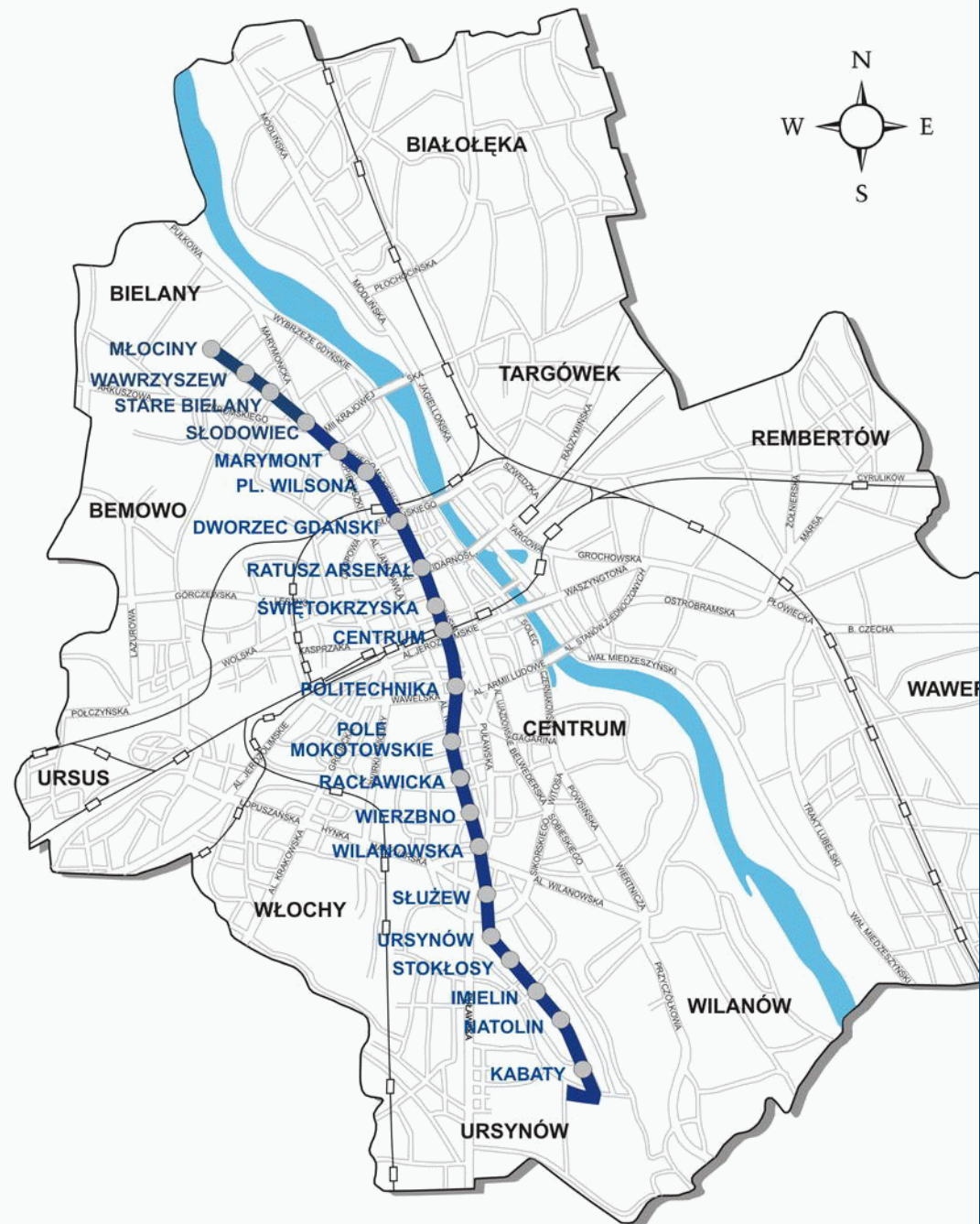
1982 – The Cabinet passed a resolution No 266/82 concerning the construction of the metro line 1



METRO IN WARSAW

Line 1

- Length – **22,7 km**
- Number of stations – **21**
- Number of passengers:
approx. **500 000 / day**





METRO LINE 1 – KABATY STATION

17 YEARS AGO AND NOW

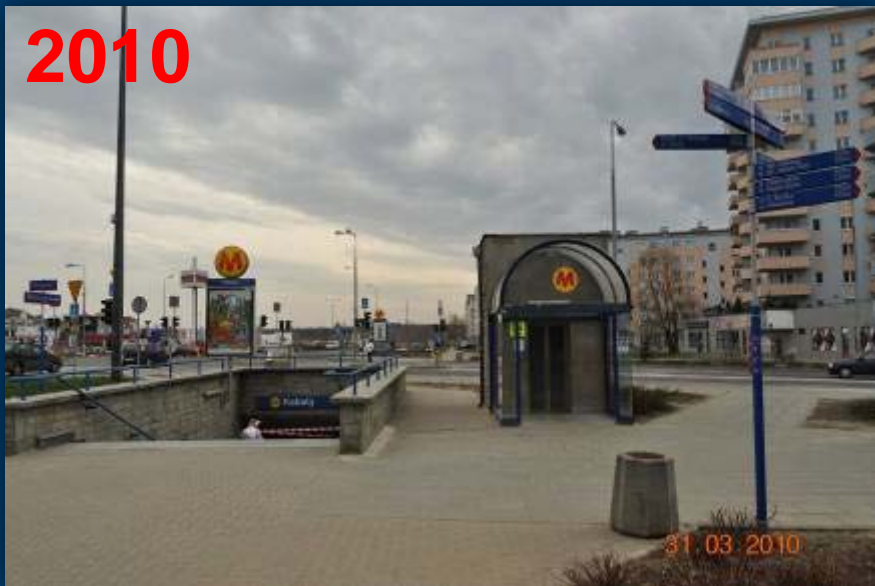
1995



2003



2010



2010





1. Park & Ride - Parking lot for 1010 cars, 70 bikes
2. Bus loop - 8 platforms
- 3., 4. Tram loop - 8 platforms
5. Connection (with shops)
- 6., 8. Metro station „Młociny” entrance
7. Patio



PLANNED METRO LINE 2

number of stations – **27**; length – **approx. 32 km**

**Western
Section (D)**

8 stations

**East-Northern
Section (A)**

6 stations

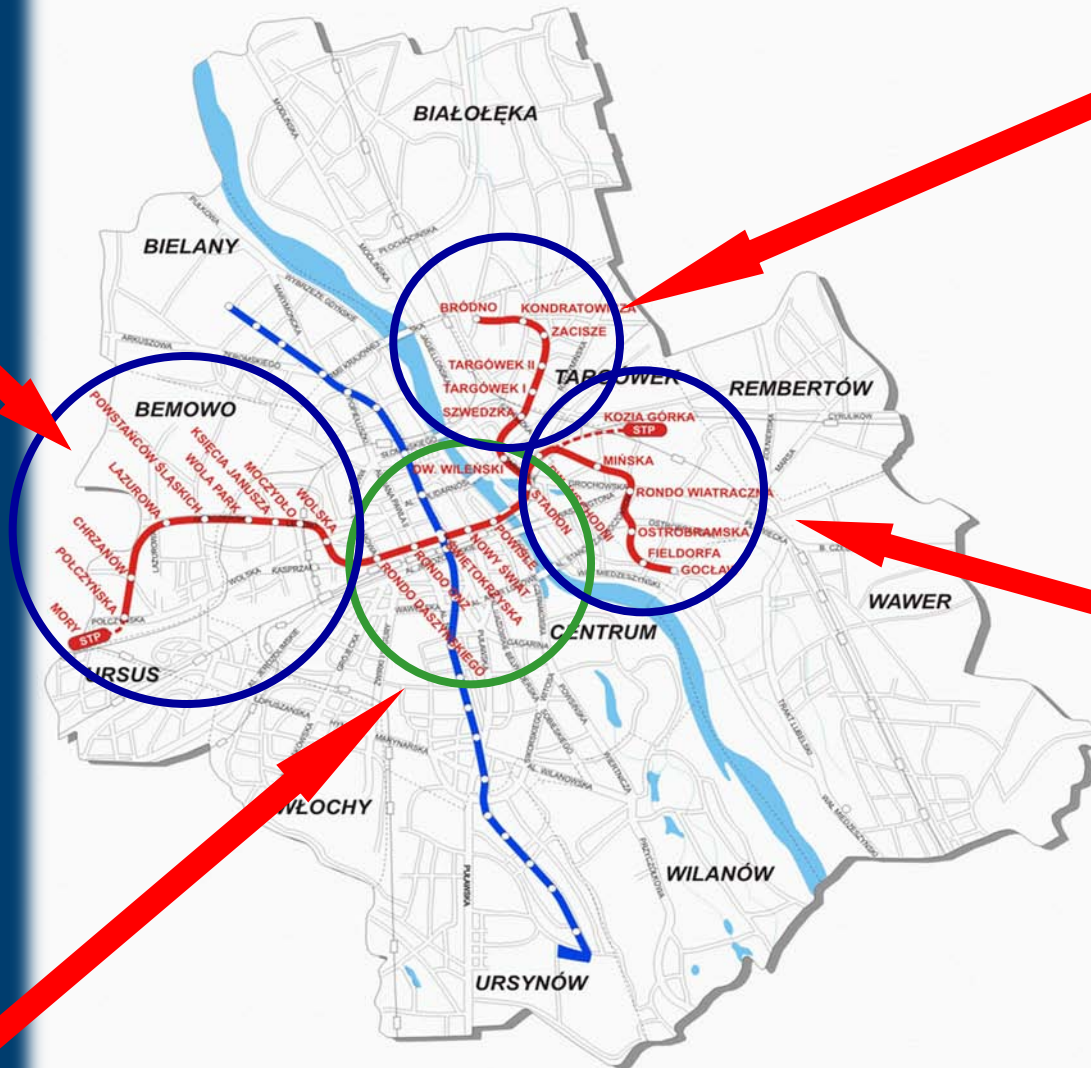
**East-Southern
Section (B)**

6 stations

**Central
Section (C)**

7 stations

(under construction)



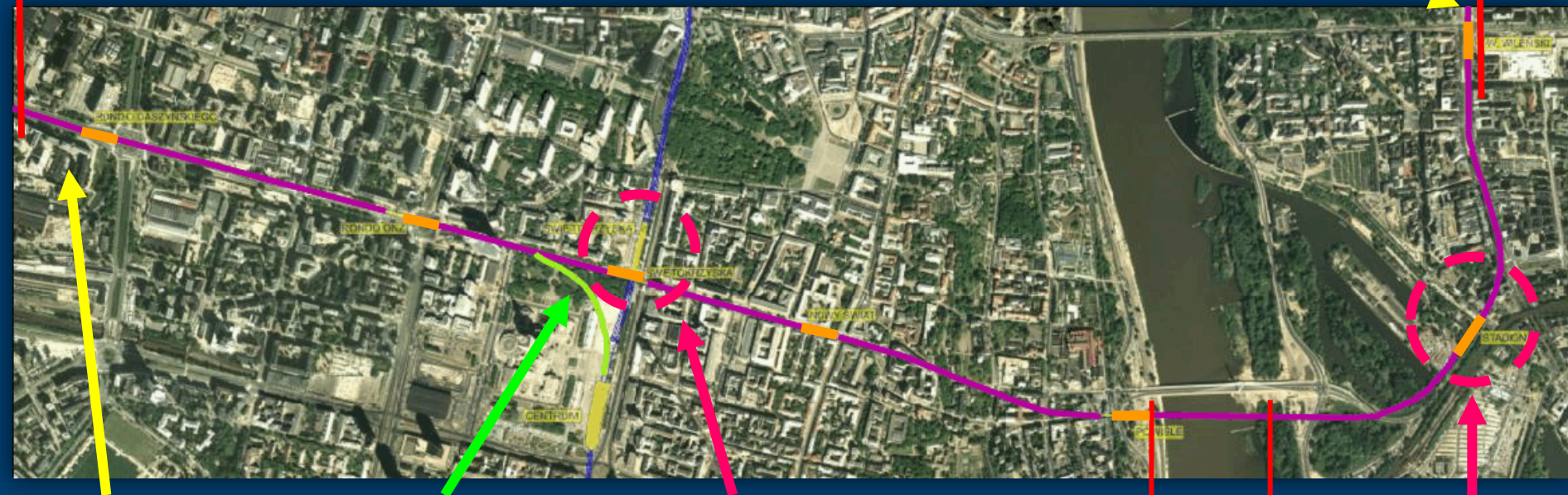
— Line 1
— Line 2 – planned



METRO LINE 2 – CENTRAL SECTION

Length: 6.5 km
Number of stations: 7

*Train
turnaround
chamber*



*Train
turnaround
chamber*

**Link tunnel
between
Line 1 & 2**

**Interchange
station**

**Tunnel under
the Vistula river
– 600m long**

**„Stadion”
Station**



WARSAW METRO Ltd.





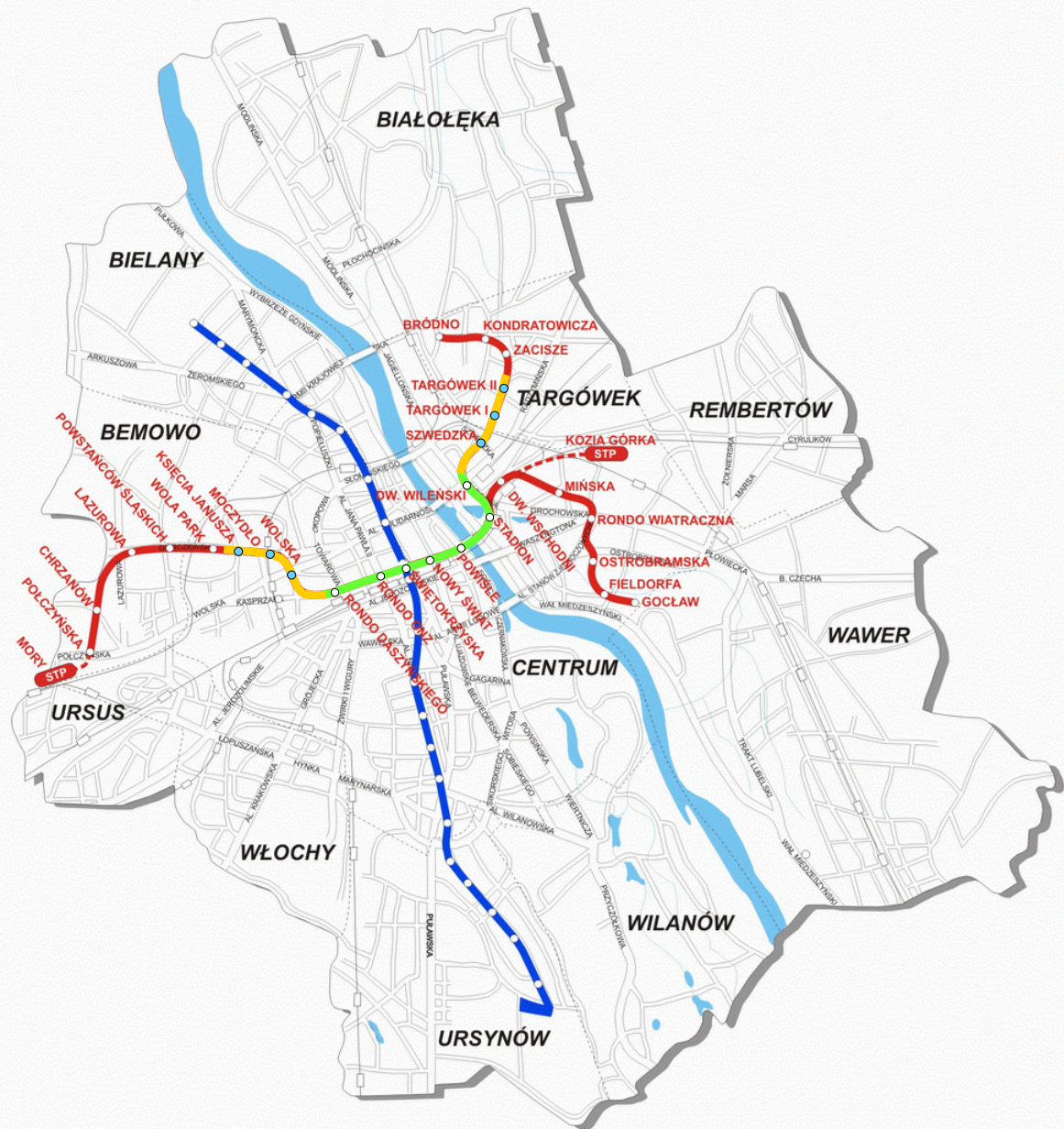
DEVELOPMENT OF METRO LINE 2

Line 2 – western section – 1st stage

- Length – 3.44 km
- Number of stations – 3
- Number of tunnels – 3

Line 2 – eastern section – 1st stage

- Length – 3.14 km
- Number of stations – 3
- Number of tunnels – 3



- Line 1
- Line 2 – planned
- Line 2 – construction (central section) / designs (1st stage of western & eastern section)

Competition for conceptual designs

- 🕒 November, 2011 Announcement of the competition
- 🕒 4th January, 2012 The deadline for submitting applications for admission to the competition

1st prize: a contract for construction project for 1 of 2 sections
(2 separate contracts are planned – 1 for each section)

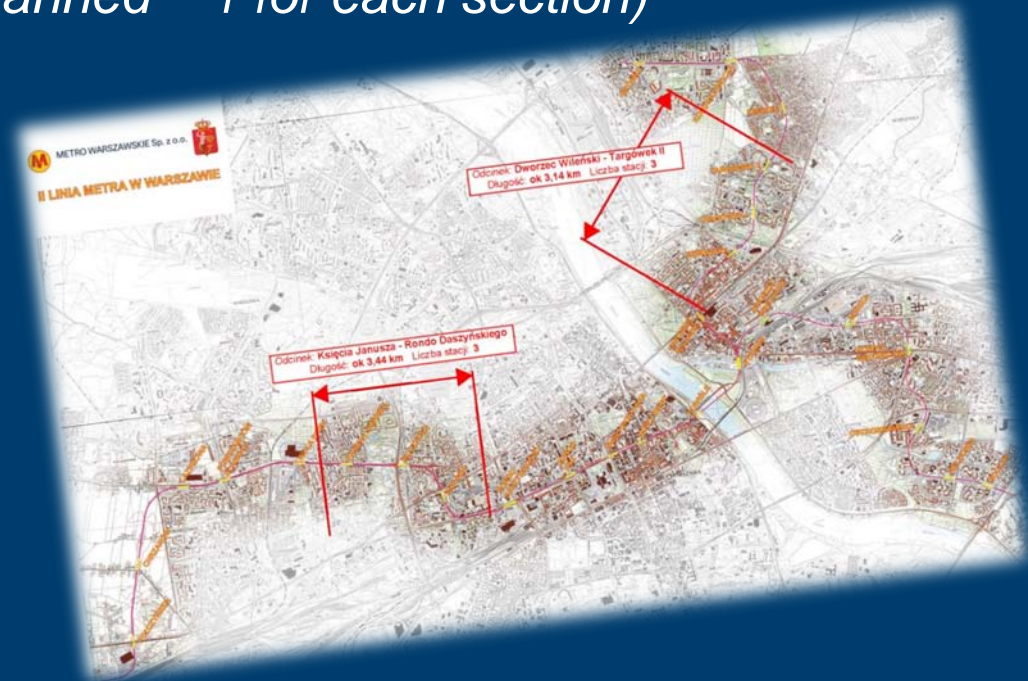
Number of competitors: 23

companies are from:

UK, Spain, France,

Germany, Finland,

Czech Rep. and Poland





social consultation
in Warsaw Metro head office

Billboard used on Line 1 - *example*

billboards

TV advertisements

meetings with inhabitants

information boards along
the construction site

local newspapers

special phone line

special e-mail

web pages of local government
& Warsaw Metro

free newsletter distributed
to inhabitants

information leaflets

information point



- Construction?
- Yes, I can accept, but not in my
neighbourhood!



Basic data:

- Ⓜ Train length: 120m (6 cars)
- Ⓜ Power supply: 750V DC (3rd rail)
- Ⓜ Max speed: 90 km/h
- Ⓜ Max capacity of the train (6 cars): approx. 1500 passengers



Series „81”
(new type)

7 trains
42 cars

ca. 93 000 km / train / year

Alstom
Metropolis

18 trains
108 cars

ca. 128 000 km / train / year

Series „81”

15 trains
90 cars

ca. 93 000 km / train / year

TOTAL

40 trains
240 cars



Total distance in year 2010 covered by 40 trains: **4 331 514.2 kilometres**



Tender for the delivery of 35 trains for Line 2 & 1

- 29th April, 2010 Announcement of the tender
- 2nd February, 2011 Signing of the agreement with the winner of the tender (SIEMENS - NEWAG)
value of the contract: 1.069 billion zł



Schedule of supply:

- December of 2012 Delivery of the first 2 trains
- 2nd quarter of 2013 Delivery of the first 10 trains
- 4th quarter of 2013 Completion of delivery





WARSAW METRO Ltd.

SIEMENS INSPIRO

**First of the ordered 35
trains under construction**



Vienna, 25th February 2012



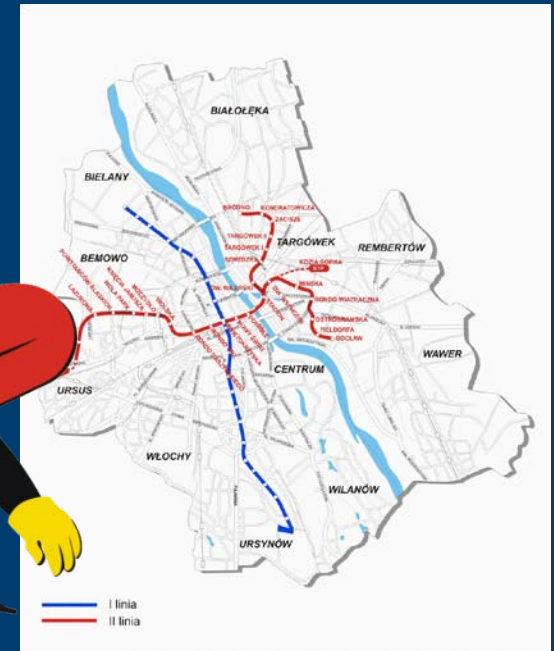


WARSAW METRO Ltd.

YEAR 2013 / 2014



**New
rolling stock**



**New
metro line**



WARSAW METRO Ltd.

THANK YOU FOR YOUR ATTENTION



Jerzy Lejk
President of the Board
CEO

www.metro.waw.pl